

## PROGRESSIVE MELASMA RECONDITIONING

PROFESSIONAL USE  
TO BE PERFORMED ONLY  
UNDER MEDICAL SUPERVISION



REVERSE  
BEA  
PEEL

THE RECONDITIONING OF MELASMA

## INDICATIONS

- Hyperpigmentation and melasma

## ADVANTAGES

- No post-inflammatory pigmentation
- Acts on various levels of the skin without causing inflammation
- Adjustable to patient tolerability
- Can be associated with many other aesthetic medicine treatments

### INGREDIENTS:

RSP1 HYDROGEN PEROXIDE, 33% TRICHLOROACETIC ACID (TCA), COGIC ACID, STABILISING AGENTS. RSP2 LACTIC ACID, PHYTIC ACID, AQUA, SODIUM LACTATE, GLYCERIN, PROPYLENE GLYCOL, XANTHAN GUM. RSP3 ALCOHOL DENAT., MANDELIC ACID, GLYCOLIC ACID, SALICYLIC ACID, PROPYLENE GLYCOL, CUCUMIS SATIVUS JUICE, ETHOXYDIGLYCOL, HYDROXYETHYLCELLULOSE, PHYTIC ACID, AQUA.



Before



After 5 sessions



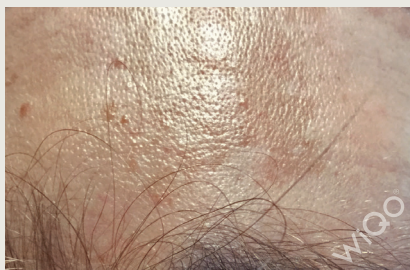
Before



After 10 sessions



Before



After 7 sessions, one per month



After 1 year

Direct line to contact dermatologists and research biologists for scientific questions or enquiries regarding outpatient treatment:  
[scientificdiv.gpq@wiqo.eu](mailto:scientificdiv.gpq@wiqo.eu)

**WiQO®**  
a GPQ brand

GPQ srl

**Operational Headquarters:** Via Martinelli, 16 – 34015 Muggia (Trieste) - Italy  
Phone: +39 040 360408 - Fax: +39 040 761393 - [gpq@wiqo.eu](mailto:gpq@wiqo.eu)  
[www.wiqo.com](http://www.wiqo.com)